

IN'ALPHA
70



A UNIQUE RANGE
WITH MULTIPLE SOLUTIONS

ALPHACAN
INNOVATIVE PROFILES & SOLUTIONS

A MEMBER OF



ALPHAPRO



ENGLISH

IN'ALPHA70 FEATURES

IN'ALPHA70 complies perfectly with the European architectural constraints, both for new building applications and renovation. Its elegant design offers the right technical solution for all building styles.

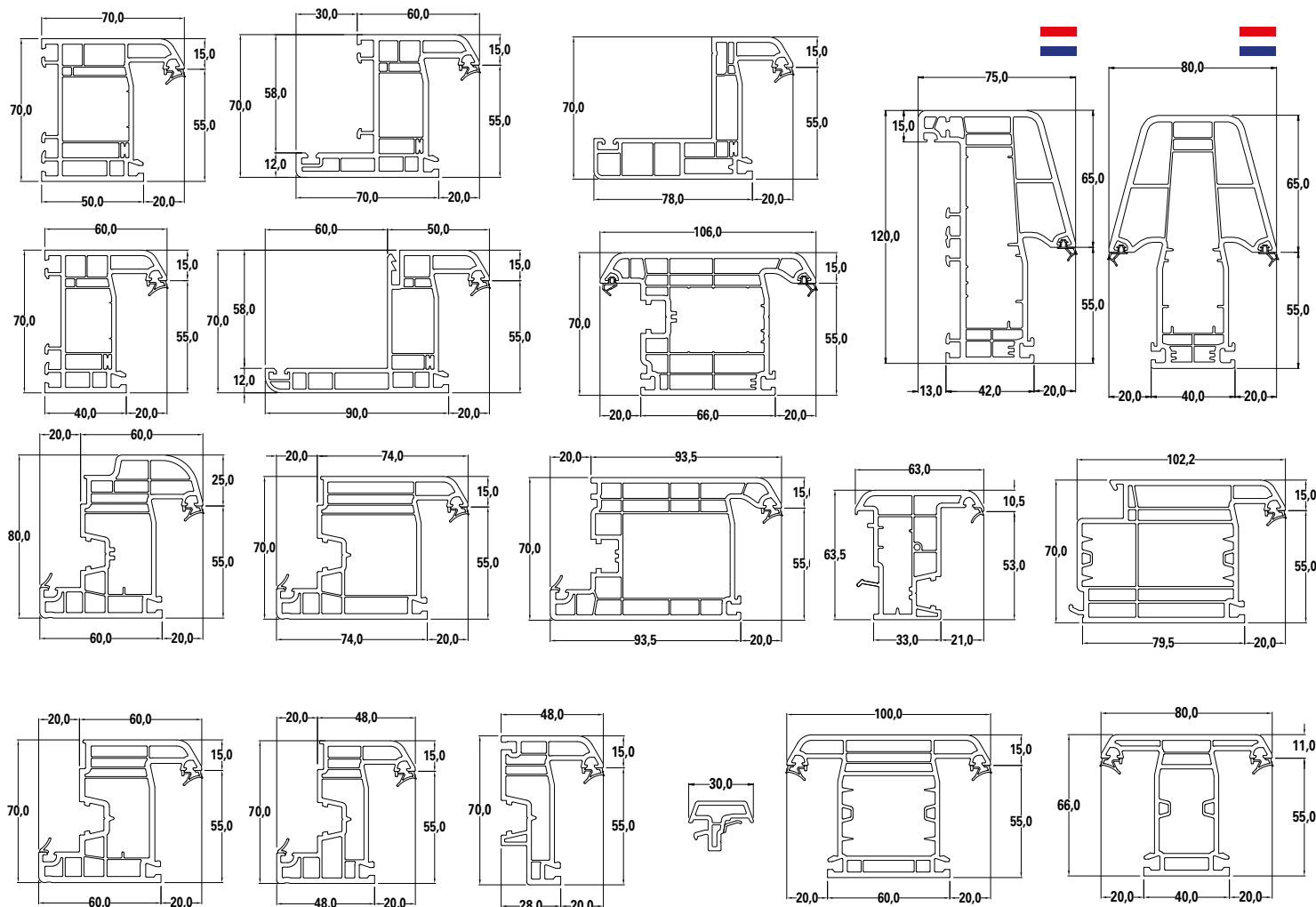
An exclusive proposal in the ALPHACAN range, IN'ALPHA70 benefits from the company's more than 50 years of experience.

With a range of 70 or 80 mm profiles with 5 or 6 chambers, the system allows for excellent thermal performance, thus complying with current European regulations. ALPHACAN has been able to concentrate its know-how in the technical innovations present in this system, proposing various exclusive options.









Like all ALPHACAN systems, IN'ALPHA70 range also complies with EN 12608. The profiles are extruded with S-type compounds for severe climates, with Ca/Zn stabilisers and are fully recyclable.

The system meets sustainability criteria and is made using a percentage of recycled material to comply with current regulations.

A COMPLETE RANGE FOR EVERY BUILDING NEED



GLAZING BEADS

LINE	24 mm	28 mm	32 mm	36 mm	40 mm	44 mm
CLASSIC	 731 24	 731 28	 731 32	 731 36	 731 40	 731 44
SQUARED		 931 44		 931 52		

ONE SYSTEM, MULTIPLE SOLUTIONS

Depending on the application and commercial requirements, the profiles will be equipped with a synthetic reinforcement in the top option.



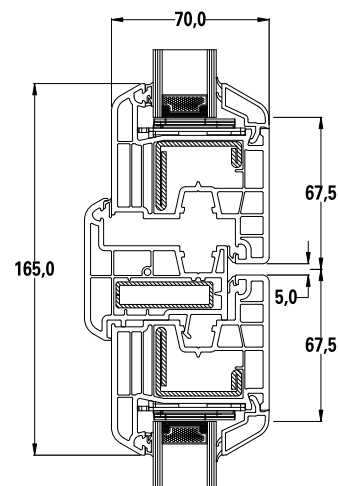
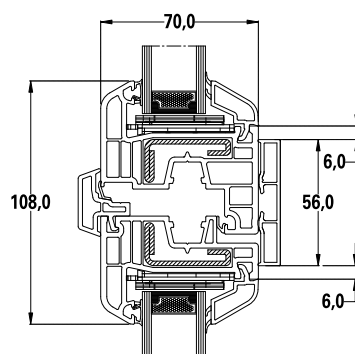
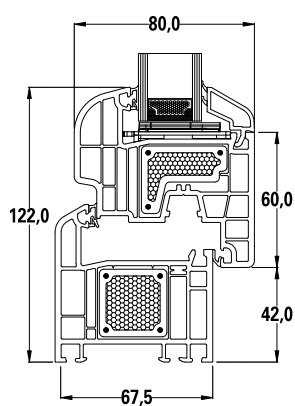
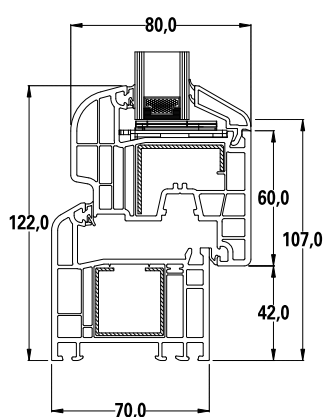
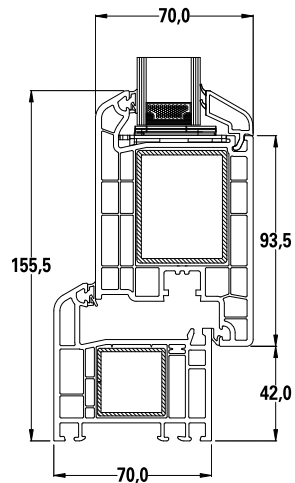
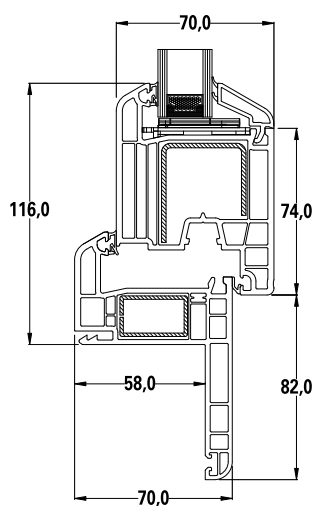
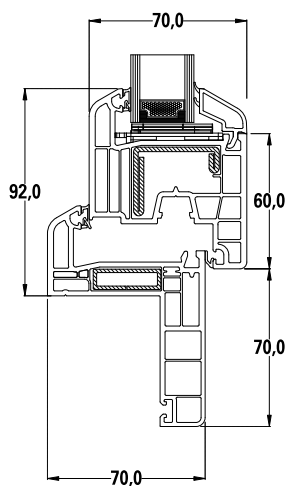
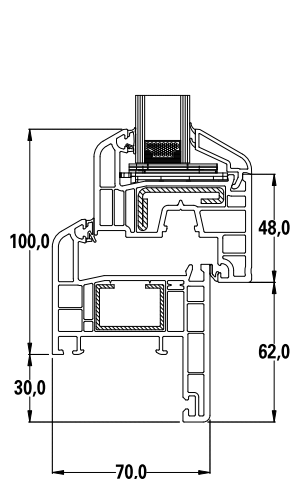
PVC multi-chamber profile system, reinforced with zinc-plated elements to confer stability functions adapted to any application need.



Eco-reinforcement: our synthetic reinforcement available for both sash and frame, prevents the use of metallic reinforcements without giving up on stability performances.

SYSTEM	PROPERTIES	$U_w [W/m^2K]$	
		Classic	Eco-reinforcement
IN'ALPHA70	Transmittance (U_g)	1,30	1,10
	Air Permeability	Class 4	
	Water tightness	U_p to E 1500	
	Wind load resistance	U_p to C5	
	Load bearing capacity 350 N (UNI EN 14608)	passed	
	Acoustics (R_w)	44 dB (with 49 dB glass)	

SECTIONS IN'ALPHA70: CONSTRUCTION PROPOSALS



DIFFERENT COLOUR SOLUTIONS

COLLECTION NEW PROPOSALS



COLLECTION MY DESIGN BY ALPHACAN



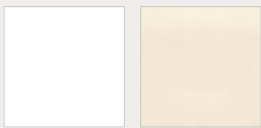
COLLECTION METALLIC DESIGN



COLLECTION MATT COLOURS



MASS COLOURS



COLLECTION CLASSIC COLOURS



Note: All pictures shown are for illustration purpose only
and actual colour may vary from the original

DIFFERENT AESTHETIC SOLUTIONS



ALPHACAN
INNOVATIVE PROFILES & SOLUTIONS

A MEMBER OF

ALPHAPRO

Company Headquarters and Production plant
Via San Sisto, 24 - I-38062 Arco (TN)
Tel. +39 0464 587 500

info@alphacan.it www.alphacan.com



AUTHORIZED MANUFACTURER ALPHACAN